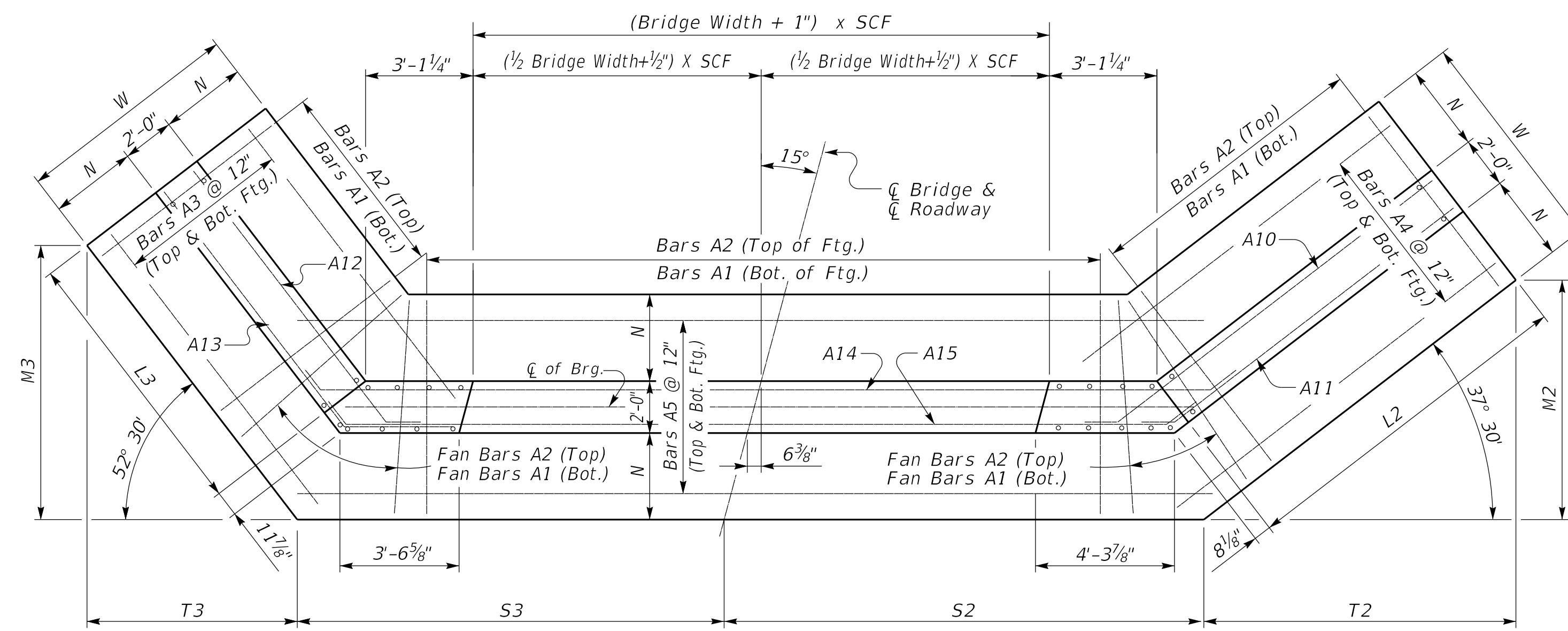


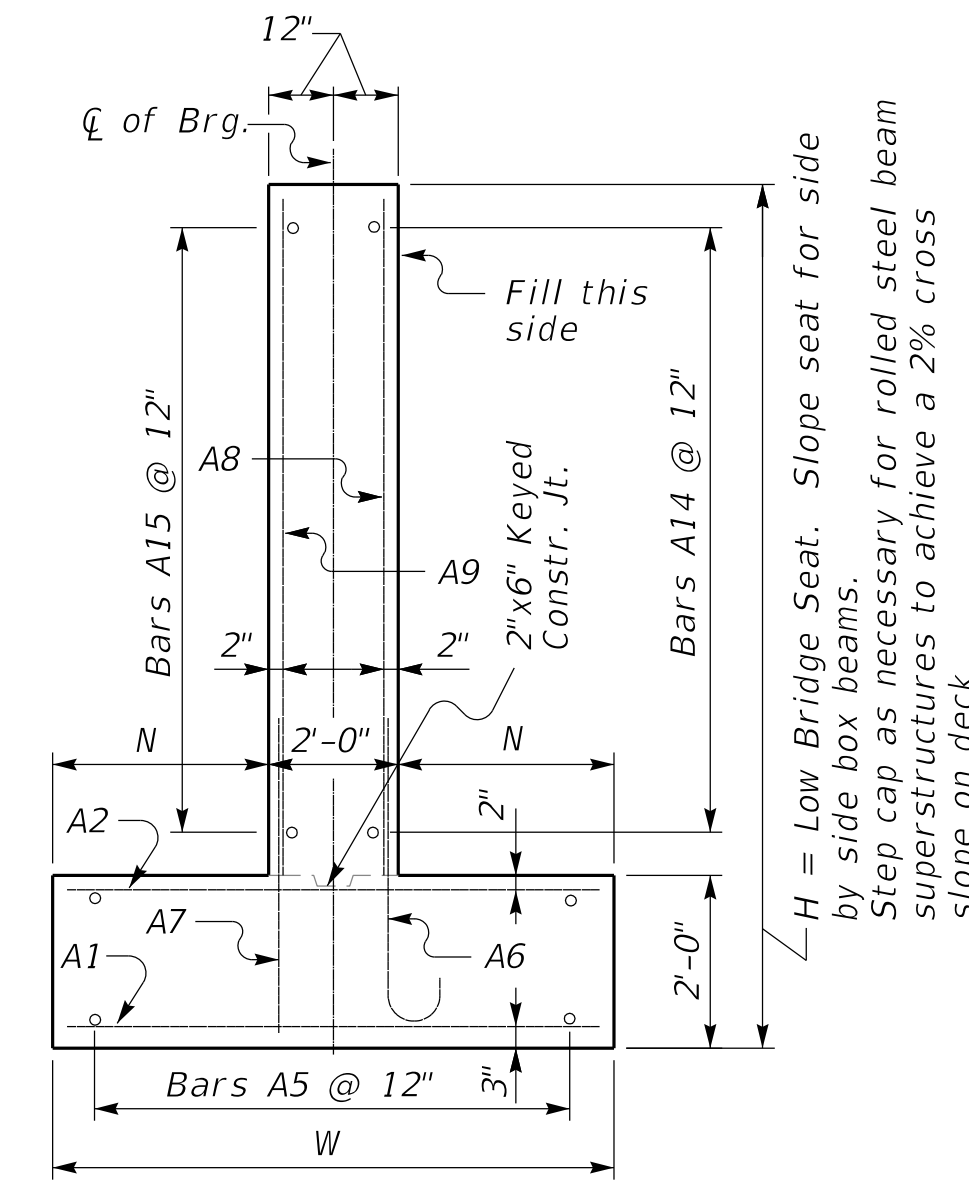
15° SKEW VARIABLE BRIDGE WIDTH 2:1 FILL SLOPES WINGS SKEWED 50% FROM ROADWAY TO BREASTWALL

ABUTMENT SKEW CORRECTION FACTOR (SCF) = 1.035

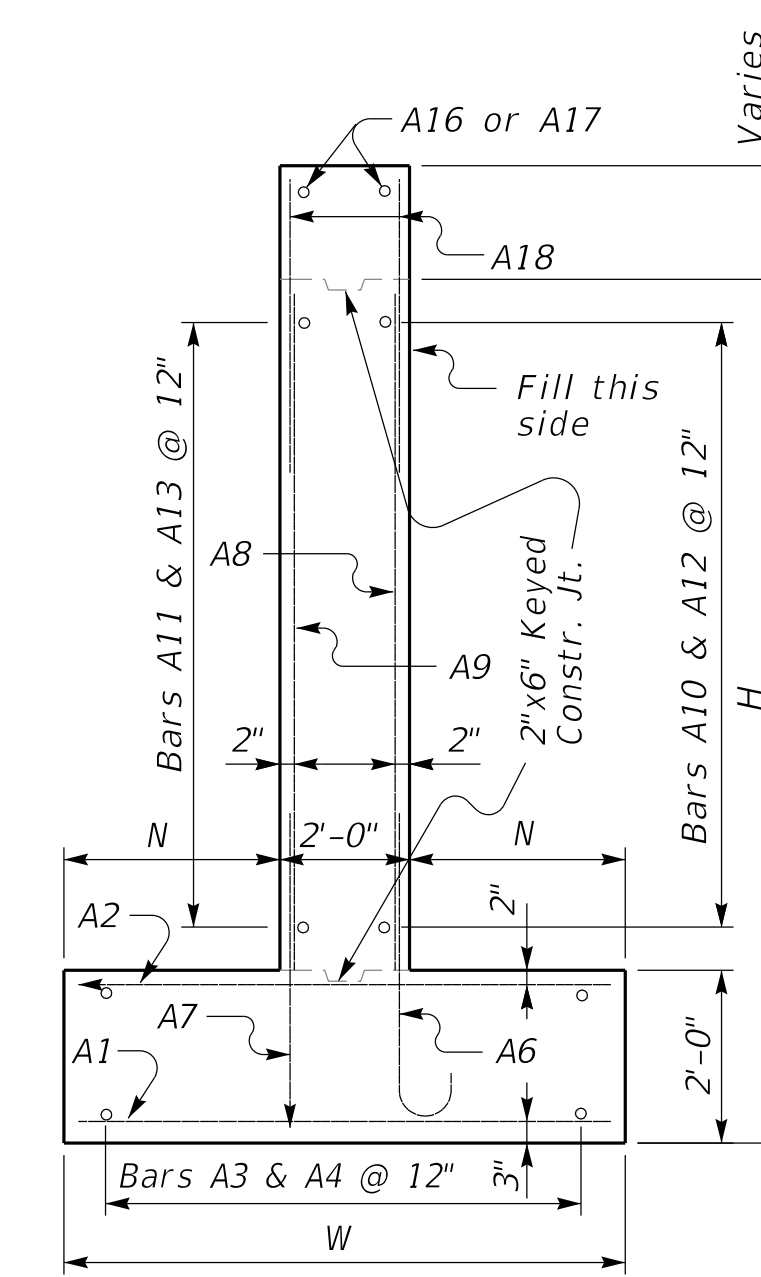


(Left Skew as shown; right skew opp. hand)

PLAN

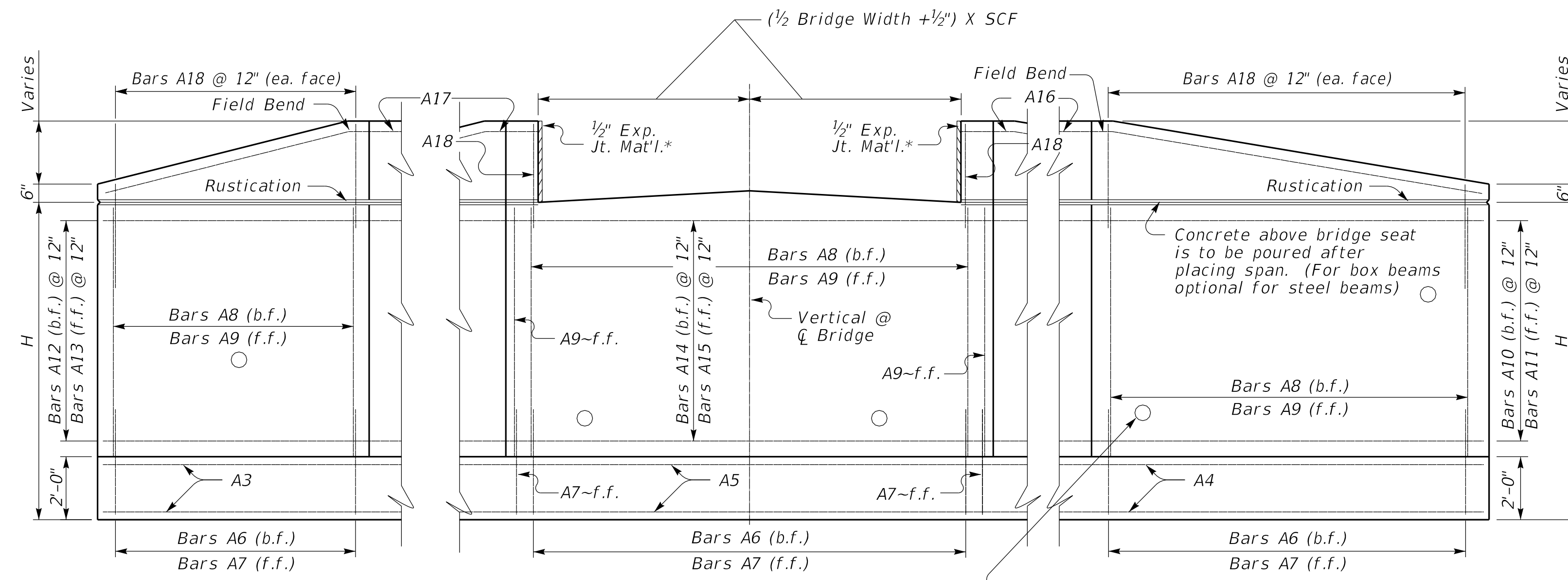


WALL SECTION



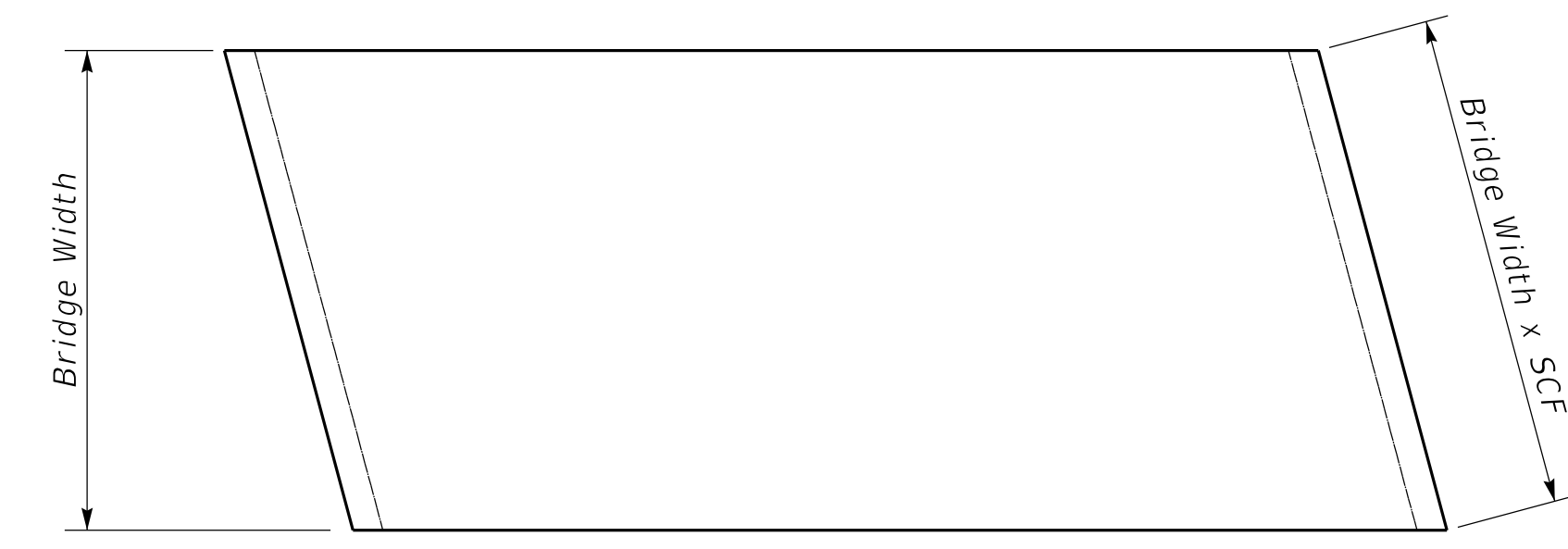
WING SECTION

Note: Trim A16 & A17 bars if necessary

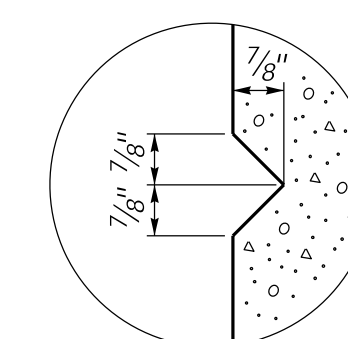


ELEVATION

Depth of int. beam, bearing pad, haunch, and slab when req.



PLAN OF SUPERSTRUCTURE SLAB



RUSTICATION GROOVE

*Expansion Joint Material:
AASHTO M153
Type-1 Sponge Rubber

REVISION DATE: 08/11/2025
REVISION NUMBER: 0

SUBMITTED: *Mark Capps* 08-11-2025 DATE
DIVISION DIRECTOR
APPROVED: *John Ballinger* 08-11-2025 DATE
STATE HIGHWAY ENGINEER

BRIDGE STANDARDS



COMMONWEALTH OF KENTUCKY
DEPARTMENT OF HIGHWAYS

15° SKEW SUPPORT VARIABLE WIDTH ABUTMENT 50% SKEWED WINGS

STANDARD DRAWING NUMBER
BSA-007-01